

S'io non venni à4 (Instrumentalfassung)

Ludwig Senfl

Cantus

Altus

Tenor

Bassus

8

15

23

32

Fine

1. 2.

1. 2.

1. 2.

1. 2.

D.S. al Fine

S'io non venni à4 (Instrumentalfassung)

Musical score for the Cantus part of 'S'io non venni à4' by Ludwig Senfl. The score is written on ten staves, each with a treble clef and a common time signature (C). The key signature is one sharp (F#). The score includes various musical notations such as notes, rests, accidentals, and dynamic markings. The piece concludes with a double bar line and a repeat sign.

8 6 %

8 10

8 14

8 18 Fine

8 23 1.

8 28 2.

8 33

8 37 D.S. al Fine

Altus

S'io non venni à4 (Instrumentalfassung)

Ludwig Senfl

8

6 %

8

11

8

16 Fine

8

22

8

27 1. 2.

8

32

8

37 D.S. al Fine

8

Tenor

Ludwig Senfl

S'io non venni à4 (Instrumentalfassung)

8
6
8
9
8
13
8
17
8
21
8
26
8
30
8
35

Fine

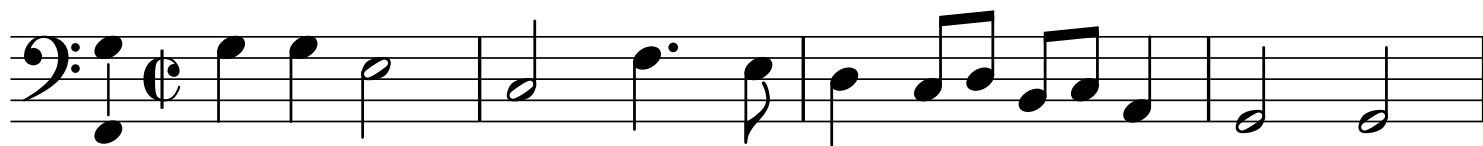
1. 2.

D.S. al Fine

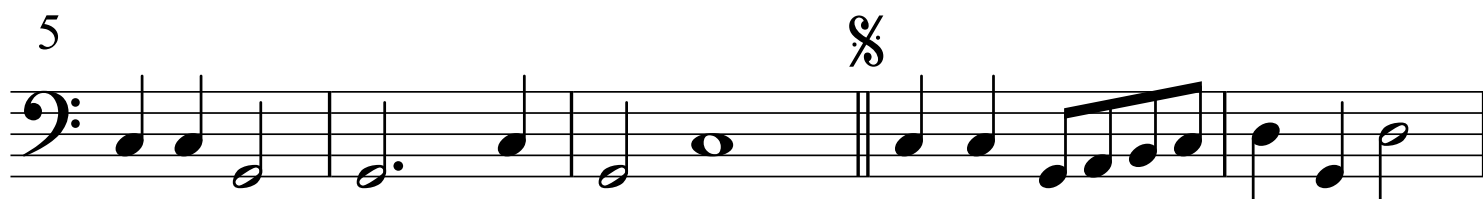
Bassus

Ludwig Senfl

S'io non venni à4 (Instrumentalfassung)



5

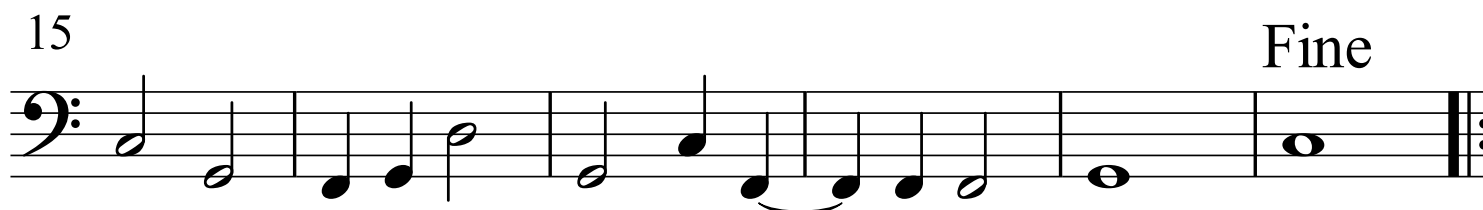


10



15

Fine



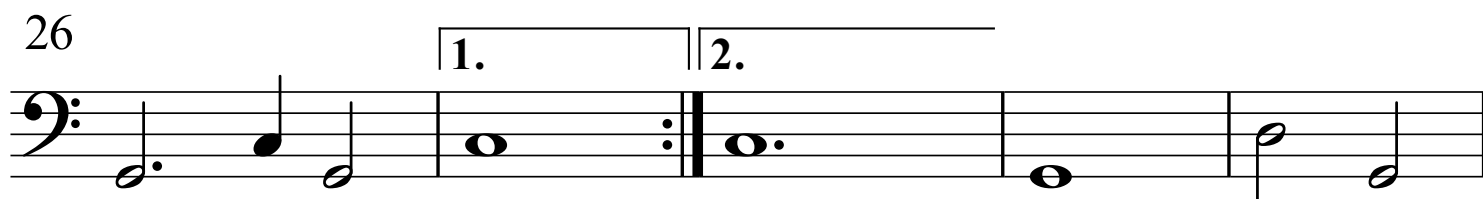
21



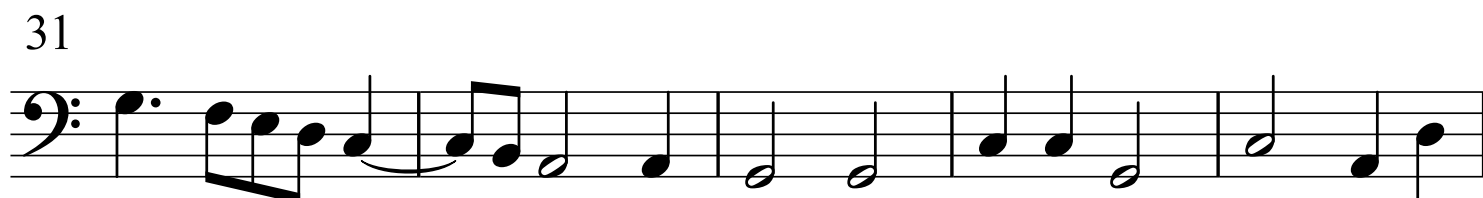
26

1.

2.



31



36

D.S. al Fine

